



Cedara

I-SoftView™



From standard image manipulation such as window/level, pan and zoom to advanced 3D rendering, **Cedara I-SoftView** offers a wide range of tools

Powerful Imaging with the Click of a Button

Cedara I-SoftView is a family of robust and clinically reliable workstations designed to optimize workflow in all healthcare environments. Created by Cedara Software Corp., a pioneer in advanced medical imaging applications, **Cedara I-SoftView** is one of the most comprehensive workstations in the PACS world.

With **Cedara I-SoftView**, healthcare facilities can capture, review, report and store images onsite while reducing operational costs. A variety of advanced clinical tools assist Radiologists and other healthcare professionals in further measuring, annotating and manipulating medical images.

Depending on your requirements, **Cedara I-SoftView** can be configured for small, medium or large institutions, with a range of different innovative clinical tools.

Dedicated Solutions for Medical Imaging

The operational costs associated with medical imaging can be staggering. From film and processing to staffing and warehousing historic images, daily operational expenditures for a Radiology Department can be astronomical.

Beyond the costs associated with hard copy reporting, film-based imaging also presents a variety of logistical nightmares. From lost or degraded films to shipping from offsite storage to concurrent needs for individual images, workflow bottlenecks are a matter of course in daily radiological practices.

To expedite the workflow of healthcare professionals, Picture Archiving and Communications Systems (PACS) provide dedicated digital solutions to many of the problems that are commonly encountered in medical imaging.

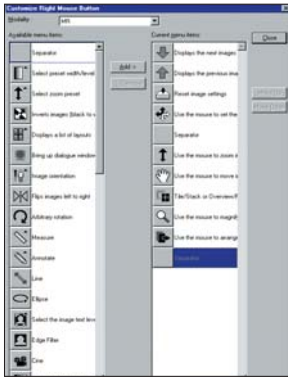


Automated workflow, presentation protocols and advanced post-processing toolsets increase Radiologists' productivity



Cedara

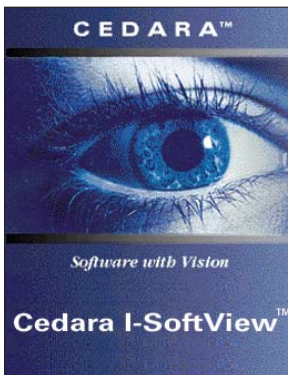
I-SoftView™



Customizable right-click popup menus allow for quick selection of review tools



Orthopaedic tools and templates are available with Cedara I-SoftView to assist in surgical planning



Experience the power of Cedara I-SoftView 6.0 today

Rich Feature Set

Highly advanced features provide full image manipulation capabilities.

- With Thick Slab support for MPR (Average, MIP and MinIP), users can reconstruct large-volume datasets made up of thin slices into studies with thicker slices.
- Batch reformatting functionality allows investigation of a 3D ROI as a new reformatted series.
- Advanced 3D volume rendering functionality is seamlessly integrated into the application and offers default presets for easier tissue segmentation.
- User-friendly orthopaedic tools and templates extend the advantages of filmless imaging to traditional film users.
- The image tagging feature enables the creation of teaching files, demonstrations and case studies.
- Images can be burned onto a CD or DVD for distribution to patients and referring physicians.

Automated Workflow

Cedara I-SoftView offers functionality that optimizes workflow in all areas of the healthcare enterprise.

- Sophisticated, user-configurable viewing protocols use advanced matching algorithms to choose the best protocol, reducing user interaction.
- Users can configure the right-mouse button for quick access to their preferred toolset.
- Users can configure shortcut keys, allowing quick access to commonly used tools.
- Interrupt Mode allows Radiologists to switch between scheduled and emergency cases without losing any data.
- Using roaming profiles, users can access their preferences from any workstation within the hospital network.

Integration and Flexibility

- Cedara's open architecture design enables easy integration with HIS/RIS systems.
- A user interface that's unified with the latest version of Cedara's web-based application, **Cedara I-Reach™**, provides flexibility and reduces the learning curve when switching between the two applications.
- **Cedara I-SoftView** provides dual monitor support.